



## GP Lenses: A Good Fit In An Aspheric Society

**Edward S. Bennett, OD, MSEd.**  
**Executive Director, GP Lens Institute**



Recently I was meeting with a prospective applicant for our College of Optometry and the comment was made that her astigmatism was causing her all kinds of visual problems with the various contact lenses that had been prescribed to her by her optometrist...all of which, of course, were soft torics.

When I asked her if gas permeable (GP) lenses had been attempted, she responded that she had never been fit into GPs. I proceeded to inform her that GP lenses may very well be an excellent option for meeting her visual demands. Obviously, this situation occurs much more than we would care to admit. I would be remiss, however, if I failed to indicate that I did read somewhere that GP LENSES CORRECT ASTIGMATISM! Obviously one of the goals of the GP Lens Institute must always be to emphasize the clinical applications of a GP lens on an astigmatic patient and to continue to provide the educational tools (*i.e.*, online book, symposia, Click N' Fit™, residents workshops, etc.) that emphasize spherical lens design in addition to specialty designs. Not providing the "Coke-Pepsi" test to astigmatic patients, therefore not allowing them to make an educated decision, sometimes resulting - as in the aforementioned case - in continuous attempt to fit a square peg into a round hole, constitutes prescribing habits that borderline on malpractice.

I want to thank the Contact Lens Manufacturers Association (CLMA) for their (Gold level) sponsorship of the Global Keratoconus Congress in Las Vegas. This two-and-one half day symposium presented the most up-to-date research and clinical management techniques for keratoconus. It was attended by over 400 practitioners, many who purchased diagnostic fitting sets from the many CLMA laboratories who exhibited at this meeting. The CLMA provided grant support that allowed contact lens faculty from almost every School and

College of Optometry in North America to attend this meeting. Likewise, (Gold Level) sponsor X-Cel provided grant support that allowed all of the graduate cornea and contact lens residents and fellows to attend the meeting. Other sponsors included Bausch & Lomb Boston, Contamac, and Rose K (Platinum Level), SynergEyes (Gold Level) and Valley Contax (Bronze Level).

Some of the key clinical findings pertaining to lens designs (large versus small), piggyback and hybrid systems, and bitoric applications will be provided in my upcoming column for *CONTACT LENS SPECTRUM*. A more comprehensive overview will be provided in the October GP issue of *CONTACT LENS SPECTRUM*. What was particularly impressive was the knowledge level and experience of the practitioners attending this symposium. It made for very informative panel discussions. With the emphasis being on clinical management, it was apparent that we all learned new designs and fitting approaches for very challenging and unique corneas. Sessions pertaining to surgical management and, in particular, etiology and potential regression of the condition via a combination of riboflavin and ultraviolet radiation were both fascinating and cutting edge. The next Global Keratoconus Congress is tentatively scheduled for January 25-27, 2008, again at Bally's in Las Vegas. See you there.

How is it that one careless match can start a forest fire, but it takes a whole box to start a campfire?

...The American Legion Magazine/Feb. 2007, p. 68

### Topics

- Practical information on: GP designs, diagnostic fitting and problem solving
- Advanced videography to provide live, dynamic case studies
- Rapid fire topical presentations by renowned practitioners will cover current clinical experiences on:  
Presbyopia, Bifocal, Multifocal  
Astigmatism & Bitorics,  
Post Refractive Surgery,  
Keratoconus, Post Penetrating Keratoplasty,  
Myopia, Corneal Reshaping, Alternative Designs
- Practice Building and Coding
- Workshop topics include:  
GP Bifocals, Multifocals, Bitoric,  
GP Irregular Cornea and Cornea Reshaping

These practical clinical "break out" sessions will permit interaction with the instructors and with several patients.

**Register online at: <http://optometry.umsl.edu>**

The University of Missouri-St. Louis is an affirmative action/equal opportunity employer committed to excellence through diversity.

### GP Specialty Lens Practice Today and Tomorrow

Sunday, May 6, 2007

Earn 8 hours of COPE/TQ Certified CE hours co-sponsored by

- Contact Lens Manufacturers Association
- Blanchard Contact Lens, Inc.
- Paragon Vision Sciences
- Alcon
- Ophthalmic Education Institute.

**Registration is \$220 through April 30, 2007.**

After April 30th the regular fee is \$250.

**Time:**

8:00 a.m. - 5:00 p.m.

Lunch will be provided.

**Where:**

JC Penney Conference Center (North Campus)

**Register by phone:**

Ann Larsen (314) 516-5948

**Information:**

Lis Ellerbusch (314) 516-5615

---

## On Line Symposia Schedule 2007

From the comforts of your own computer environment, log onto [www.gpli.info](http://www.gpli.info) for a 1 ½ hour discussion with industry experts. Cases posted on our website prior to the symposia will facilitate opening remarks, questions and solutions. The On Line Symposia begins at 9:00 PM Eastern Time Zone (USA).

April 17, 2007

### GP Management of Keratoconus

Dr. Bruce Anderson; Dr. Scott Edmonds

June 12, 2007

### Corneal Reshaping: from kids to adults

Dr. Marjorie Rah; Dr. Cary Herzberg

August 14, 2007

### GP Correction of High Astigmatism

Dr. Joe Silbert; Dr. Tom Quinn

October 16, 2007

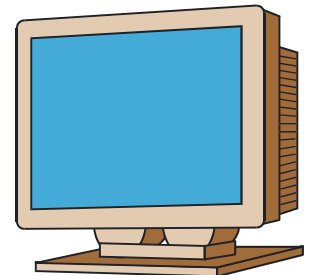
### Post-Surgical Correction with GP Lenses

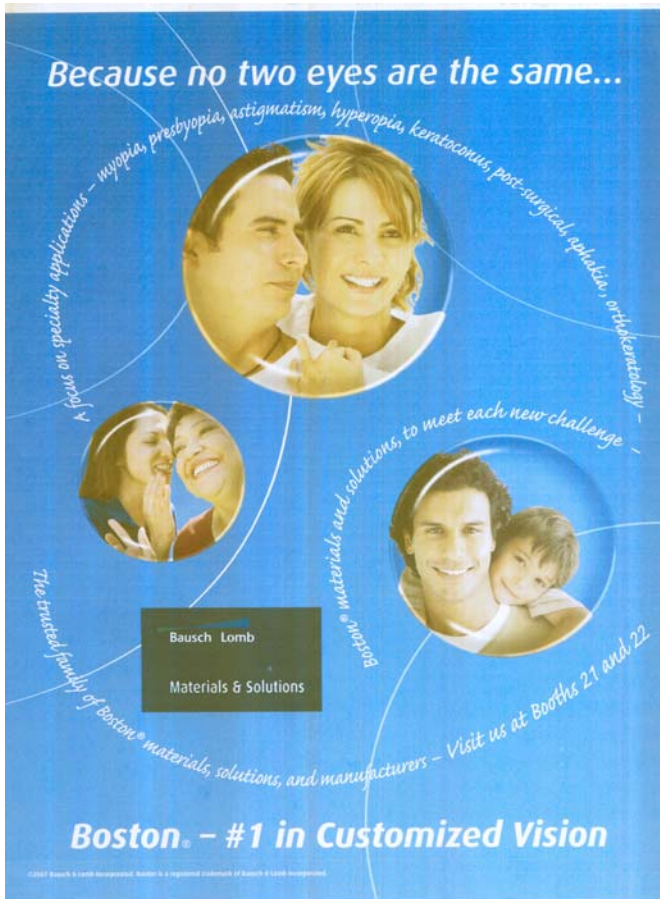
Mr. Michael Ward; Dr. Bob Grohe; Dr. Loretta Szcotka-Flynn

November 13, 2007

### GP Correction of Presbyopia

Dr. Doug Benoit; Dr. Richard Baker





## CLSA 52<sup>nd</sup> Annual Education Meeting

April 18-21, 2007

Pointe Hilton Squaw Peak Resort  
Phoenix, Arizona (USA)

This meeting is for eye care professionals with a specialty in contact lenses. It's for the experienced contact lens fitter, or those with an interest in becoming a contact lens fitter.

**The CLMA/GP Lens Institute will be exhibiting in**

**Booth #44**

Visit our booth for the latest GP educational resources available to you as an eyecare professional. The goal of the GP Lens Institute is simple and straightforward: educate students and practitioners about the importance and clinical applications of GP contact lenses.

## The GP Lens Institute

Supported by the member companies of the CLMA

Offers the following educational resources:

### Resources for Patients

GP Options Patient Brochure

Contact Lenses Over 40 Brochure

GP Lens Care & Handling Brochure

### Resources for Practitioners/Staff

Rx for Success: The Presbyopic Tool Kit

Searchable GP Lens Database, materials & solutions

GP Clinical Grand Rounds Book (Coming May 2007)

GPLI OnLine Symposia

Fluorescein Pattern ID Card

Communicating Presbyopia Options Laminated Cards

Conversion Chart

Reading Verification Laminated Card

CD - Fitting, Evaluation and Problem-Solving with  
GP contact lenses

GP Educational Kit

GP Contact Lens Newsletter....CONTACTS

Order these educational resources from  
[www.gpli.info](http://www.gpli.info). Most of these resources are  
complimentary (up to 200 except where noted).

Next issue of CONTACTS....May, 2007