



CONTACTS

GP Lens Institute Cornea and Contact Lens Resident Educational Program



Edward S. Bennett, OD, MEd
Executive Director, GP Lens Institute

The 2007 GPLI Cornea and Contact Lens Resident Symposium was August 24-26, 2007 at The Ohio State University College of Optometry. The 9th annual program likely was the most successful program to date. Organized with the assistance of Ursula Lotzkat, Dr. Cathy Pannebaker and Pam Witham, 25 optometric residents from 17 schools and colleges of optometry as well as the Jules Stein Eye Institute (UCLA) attended this program.

The Friday session pertained to a seminar on fitting GP spherical lenses by Keith Ames, OD followed by a session pertaining to fitting GP toric lenses by Tom Quinn, OD, MS. Both Tom and Keith have the amazing ability to make it very simple to fit GP lenses. Tom's dynamic toric lens program will soon be on our website and he is also narrating the toric module for our upcoming *Click N' Fit*® program currently under development by WINK Productions. The final session Friday pertained to a new seminar designed to help the residents in their ability to be effective clinical instructors and also to improve their scientific writing skills. Dr. Kelly Kingsbury, who recently completed the Cornea and Contact Lens Residency program at Southern California College of Optometry and is now serving as a clinical instructor at Ohio State, discussed important factors in serving as a clinical instructor with assistance from information provided by GPLI Advisory Committee member Dr. Neal Pence. I provided a brief overview of important factors associated with writing for publication.

The Saturday session began with a spherical, toric and modification workshop. Included in this workshop were multiple stations in which the residents were required to fit new patients with spherical GP lenses. Throughout the three day program we were greatly benefited by the assistance provided by CLMA representatives George Mera (Tru-Form Optics, Inc.), Mary Ann Kail (Essilor USA – Contact Lens Division), Richard Dorer (Blanchard Contact Lens Inc.) and Keith

Parker (Advanced Vision Technologies). Keith has attended all nine programs and once again was kind enough to serve as the modification instructor. Following the workshop I presented a "fitting the presbyopic patient" seminar which was followed by a GP multifocal/bifocal workshop in which the residents rotated through several stations, all wearing GP bifocal or multifocal lenses. The Saturday session concluded with a corneal reshaping presentation by Craig Norman which also included case presentations pertaining to two patients (including George Mera) who were kind enough to wear lenses overnight.

The Sunday session was highlighted by presentations from Joe Barr ("fitting keratoconus patients") and Loretta Szcotka-Flynn ("fitting the post-surgical patient"). This was followed by a workshop that included keratoconus, post-surgical and corneal reshaping patients. OSU faculty Drs. Kathryn Richdale and Eric Ritchey were kind enough to assist Tom, Keith, Craig, Joe, Loretta and I with the workshop instruction. This weekend marked the return of Joe Barr to Ohio State and his formal retirement reception was held that Friday night.

The residents also received numerous resources including a portable drive which included fitting guides and related information from many CLMA laboratories. They also received a notebook with all of the powerpoints from the presenters and the opportunity to receive three complimentary GP fitting sets as donated by CLMA laboratories (thank you!). A true highlight of the meeting, however, was a special encore performance from Tom Quinn who performed a medley of songs from "The Music Man". Tom had the lead role (for the 2nd time) in the production of this musical this summer in Athens, Ohio.



"Professor Hill" and his sidekick "Marcellus" as presented at the 2007 CL & Cornea Resident Weekend
Aka (Drs. Tom Quinn and Ed Bennett) Ahhhh...the memories



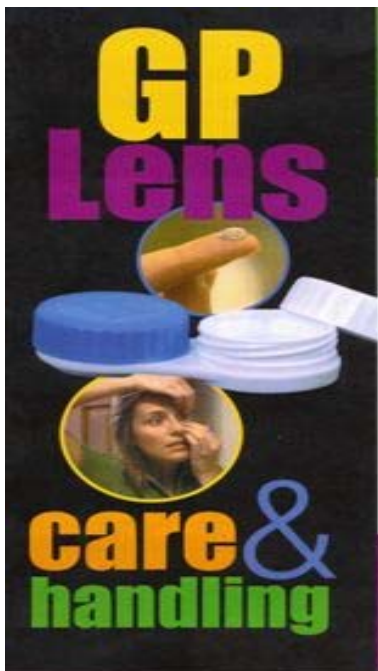
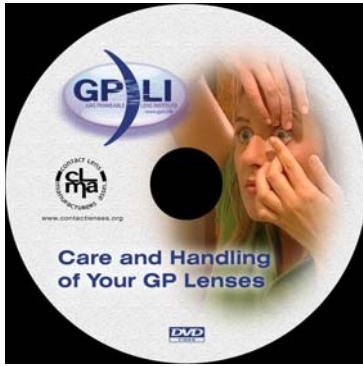
Sample of "Mail" received:

"Thank you!!!

I want to let everyone know that you did a terrific job with the program. You have taken my fear of complicated GP fitting and have replaced it with excitement and motivation. Meeting you all and getting to pick your brilliant minds was a great way to spend a weekend. I look forward to seeing you again."

.....Terri Robinson, OD

*Cornea & Contact Lens Resident
Indiana University School of Optometry*



Just Released

DVD – *Care and Handling of Your GP Lenses*

Brochure – *GP Lens Care and Handling*

Available for shipment today!

Updated

Show the DVD in your clinical fitting exam rooms

Send the brochure home with your patients

Order quantities from your CLMA member laboratories

Order quantities from our website www.gpli.info

Featuring

Lens Application

Lens Centering

Lens Removal

Caring for your GP contact lenses

DVD - Available for patient viewing on

www.contactlenses.org

EFCLIN Congress & Exhibition October 11 – 13, 2007 Malaga Spain

www.efclin.com (for more information and registration to attend)

For the suppliers to and manufacturers in the contact lens and IOL industry.

News Release.....ABO/NCLE


The American Board of Opticianry (ABO) and National Contact Lens Examiners (NCLE) announce their first National Education Conference to be held September 19-21, 2008 at the Duke Energy Center, a state-of-the-art convention facility, in Cincinnati, Ohio (USA).

The conference will offer three days of training and education to improve an optician's technical, managerial and personal performance. Over 100 hours of ABO and NCLE approved education developed with their education partners: National Academy of Opticianry (NAO), Opticians Association of America (OAA) and Contact Lens Society of America (CLSA), will offer more ABO-NCLE CE credits, including hands-on training, than any other convention. The weekend will offer review classes for both the ABO-NCLE and ABO-NCLE Advanced exams, with the corresponding certification examinations offered on-site.

The Optical Showcase exhibit hall will feature state-of-the-art products, major companies from the optical and contact lens fields and "show and tell" demonstrations. For more information visit www.abo-ncle-conference.com.

Introducing the

**Bausch & Lomb
Boston[®] XO₂**
Material



Allows 40% more oxygen to reach the eye, supporting corneal health and overall comfort*

- A hyper-Dk GP material that provides exceptional oxygen delivery (Dk =141)**
- Provides the stability generally found in low to mid Dk GP materials
- Ideal material for a variety of special design applications
- Inherently wettable so plasma treatment is optional

* Boston XO₂ delivers 40% more oxygen versus Boston XO.
** Dk 141 ISO/Fatt Method.
© 2007 Bausch & Lomb Incorporated. Boston is a registered trademark of Bausch & Lomb Incorporated.

GP Lens Institute
On Line Symposium

www.gpli.info

October 16, 2007 (Tuesday)
9:00 PM Eastern USA Time

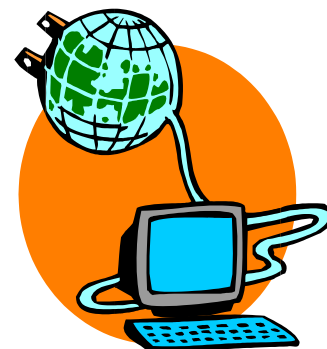
Post-Surgical Correction with GP Lenses

Guest GPLI Advisory Faculty:
Dr. Robert Grohe
Dr. Loretta Szczotka-Flynn

Moderator:
Dr. Ed Bennett

.....

From the comforts of your computer, log onto www.gpli.info and take the link found on the home page for joining the on line symposium. This 1 ½ hour discussion is for all eyecare professionals – to share, learn and pose questions to our experts. The first hour is devoted to the above topic with the last ½ hour available for any GP contact lens questions you may have. Please come and observe and/or participate in this worthwhile educational resource available.



Next issue of GPLI's
CONTACTS
November, 2007

► **GKC 2008** ◀

CLMA and the GPLI are pleased to announce they are a **gold** level sponsor to the second Global Keratoconus Congress (GKC), January 25-27, 2008, at Bally's Hotel and Casino in Las Vegas, NV.

This sponsorship will be utilized to provide the registration fees for one educator from each of the optometric colleges/universities. Announcements and invitations will be sent later in 2007.

The 2.5 day International meeting is designed to focus specifically on the latest diagnostic tools and treatment for keratoconus. As with the highly successful 2007 meeting, GKC 2008 will provide expert insights, fitting sessions and access to the most advanced products used in treatment. In addition, the 2008 meeting will include 15 new speakers providing hands-on workshops, strategies for irregular astigmatism and expert insights into fitting after surgery and corneal trauma.

For more information or to register visit www.GKCongress.com.