

CONTACTS

VOLUME 2008, ISSUE 3

MAY, 2008

Finding GP Contact Lenses

GP Fitter Locator Searchable Database

In responding to the numerous requests that we receive from consumers on contactlenses.org to recommend a GP practitioner in their area, the GP Lens Institute is introducing a “GP Fitter Locator” program which is in the process of being launched on that website. If you are not currently a member of our GP Fitter database, you can go to www.gpli.info and sign up for this program. Through the efforts of our advisory committee members, and promotional efforts via CL Today (Dr. Carla Mack and Lisa Starcher), eyedock.com (Dr. Brian Chou) and allaboutvision.com (Eye-Opener newsletter), we have been able to effectively promote this program to practitioners who fit GPs and would like to participate. We are especially in debt to Ron Walker from allaboutvision.com for all of his efforts as well as the coordination of this program by Pam Witham.



*Edward S. Bennett, OD, MSED
Executive Director, GP Lens Institute*

Submit your information on www.gpli.info >> referrals, new patients!

GP Lens Troubleshooting Guide

We are in the process of updating and adding to our online text and we would like to enlist your support in authoring cases for this text. We have received a few more cases to add, but I would like to see 20–30 more cases to be posted as part of this text by the CLMA Annual Meeting in early November. We could especially benefit from irregular cornea cases although bi/multifocal cases are also welcome, especially if they are different from one’s already posted. Please let me know if you are interested (ebennett@umsl.edu). It is a simple format that should not take very much time but will contribute to the education of practitioners who are interested in fitting GP lenses.

INSIDE THIS ISSUE:

GPLI Presence at AOA	2
Exciting New Research	2
Searchable Databases	2
ABO—NCLE	3
GP Clinical Excellence	4
On Line Symposium	5
Grammie Pammie	6

SPECIAL POINTS OF INTEREST:

- *GP Fitter Locator*
- *Educational opportunities for fitting GP lenses*
- *AOA—Booth #2308 and workshops*
- *GP lenses are successful*

The GP Lens Institute Presence at the AOA Meeting

Through a grant from the Contact Lens Manufacturers Association, the GP Lens Institute will be providing a two course case grand rounds program at the Annual Meeting of the American Optometric Association in June. The “Gas Permeable Video Grand Rounds Part One: Spherical and Toric Lens Fitting and Problem-Solving” course will be provided by Louise Sclafani, Christine Sindt and myself. The “Gas Permeable Video Grand Rounds Part Two: GP Presbyopic Fitting and Problem-Solving” will be presented by Pat Caroline, Christine Sindt and myself. We hope this will be the first of many annual symposia of this format in the future with the AOA.



Visit the CLMA/GP Lens Institute's **Booth #2308** during AOA exhibition hours.

Exciting New Research

It is always great when our advisory members publish articles that are very positive about the benefits and applications of GP lenses. Michael Ward, Buddy Russell and their colleagues at Emory University published an article entitled “Visual Rehabilitation and Outcomes for Ectasia after Corneal Refractive Surgery” in the March, 2008 issue of the *Journal of Cataract and Refractive Surgery*. This consisted of a retrospective review consisting of 74 eyes of 45 patients with corneal ectasia after LASIK (72 eyes) or PRK (2 eyes). Corneal ectasia developed a mean of 19 months after surgery. Post operatively the mean uncorrected visual acuity was 20/400 and the mean best corrected spectacle visual acuity was 20/108. After ectasia management, the mean best corrected visual acuity was 20/37 and the final best corrected visual acuity was 20/40 or better in 78% of eyes. 77% of the eyes were successfully fit into GP lenses (9% spectacles, PKP in 8%, collagen cross-linking 3% and INTACS 1%). The important outcome was that the great majority of patients developing post-operative corneal ectasia achieved functional visual acuity with GP lens wear and did not require further intervention.

***77% of the eyes
were successfully fit
into GP lenses***

www.gpli.info

Our website is supported by the member companies of the Contact Lens Manufacturers Association (CLMA). Please support these members when ordering custom manufactured contact lenses. Included on our website:

Searchable database of GP contact lens fitters
Searchable database of GP lens designs,
materials, ancillary products & solutions

2008 ABO-NCLE
NATIONAL EDUCATION
CONFERENCE

ABO-NCLE National Education Conference

Today's Optical Training for the Eyecare Office

September 19-21, 2008

The conference course schedule and program descriptions are now online at

www.abo-ncle-conference.com.

The inaugural ABO-NCLE National Education Conference is September 19-21, 2008 in Cincinnati, OH. The event will offer three days of training and education to improve an optician's technical, professional, managerial and personal performance.

Highlights:

Hands-on Pavilion offers over 40 hours of sessions providing a meaningful practical learning experience.

Basic and Advanced ABO and NCLE **review courses**, as well as **certification exams** will be offered.

Discovering the Secret of Supervisory Success, Becoming a Better Office Manager.

*Duke Energy Center
Cincinnati, OH
September 19-21, 2008*

The **Optical Showcase** exhibit hall features state-of-the-art products from major optical and contact lens companies with free CE educational opportunities available in the Learning Center.

Plan on attending the ABO-NCLE National Education Conference. Find out additional details and register at www.abo-ncle-conference.com.



Practical Clinical Information for Contact Lens Practitioners of Every Discipline



Written by contact lens practitioners for contact lens practitioners, *Contact Lens Spectrum* has been providing optometrists, ophthalmologists and opticians with practical, authoritative insights — from fitting irregular corneas and treating dry eye, to managing your contact lens inventory and ensuring patient compliance — for more than 20 years.

In addition, *Contact Lens Spectrum* provides valuable information on its website and hosts targeted conferences such as the Global Keratoconus Congress. The comprehensive website, www.clspectrum.com, provides: articles archives, breaking news, announcements of upcoming events and seminars, links to online CE, and more; to help you stay on top of the contact lens issues that matter most to you.

Visit us online at www.clspectrum.com.

Contact Lens
SPECTRUM

www.clspectrum.com



Herschel Medal to Dr. William "Joe" Benjamin

The International Society of Contact Lens Specialists (ISCLS) awarded the Society's highest award, the "Herschel Medal" to Dr. William J. Benjamin at their awards banquet April 15 in Buenos Aires. Dr. Benjamin is on the faculty with the University of Alabama at Birmingham School of Optometry and recognized for his contact lens expertise in the field of education as well as clinicals.

Congratulations!

Dr. Benjamin, the 2006 CLMA Dr. Josef Dallos Award winner, will be the keynote speaker at the 47th Annual CLMA Meeting and Exhibition November 13-16, 2008.

GP Clinical Excellence Awards

The GP contact lens Clinical Excellence Award is being presented at each optometric college/university in the United States and Canada. The candidates are chosen by their respective faculty for their enthusiasm and expertise in their contact lens clinical environment. This award is sponsored by the GP Lens Institute and member companies of the Contact Lens Manufacturers Association. Each award winner receives an engraved wooden plaque and a certificate good for a GP diagnostic fitting set supplied by a member company of the CLMA.

The following awards have been presented as of the date of release for this newsletter. *Congratulations to each 4th year student that has received this award.*

Pennsylvania College of Optometry

Karen Ellen Goodwin, OD

Sponsored by Luzerne Optical Laboratories, Ltd.

NOVA Southeastern College of Optometry

William Yu, OD

Sponsored by Lens Dynamics, Inc.

*Excellence in the
fitting of GP
contact lenses*

Southern College of Optometry

Becca Jackson, OD

Sponsored by Soderberg Contact Lens/ A Walman Company

UAB College of Optometry

James Edward Crockett, OD

James Caleb Gardner, OD

Sponsored by ABBA Optical, Inc.

Indiana University College of Optometry

Nate Otte, OD

Sponsored by American Contact Lens Service, Inc.

Illinois College of Optometry

Karen DeLoss, OD

Sponsored by Quality Contact Lens, Inc.

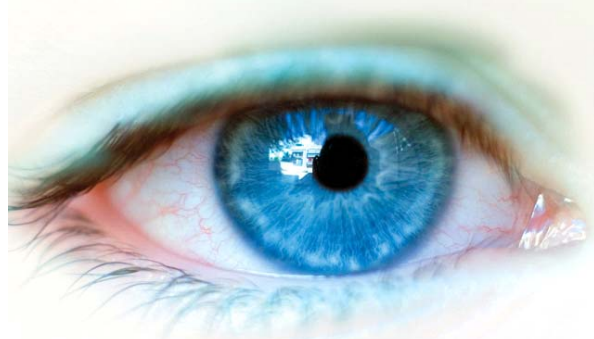
Michigan College of Optometry

Brent Beldyga, OD

Sponsored by Art Optical Contact Lens, Inc.

Did You Know?

Paragon CRT® is emerging as an answer to eye dryness and discomfort experienced by soft lens wearers.

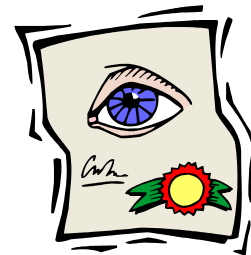


Practitioners report accelerating use of Paragon CRT for patients experiencing dry eye discomfort with soft contact lenses and for those patients that previously discontinued contact lens wear for similar problems.



www.paragoncrt.com | 800-528-8279


www.paragoncrt.com



Continuation of GP Clinical Excellence Award Winners

Introducing the

**Bausch & Lomb
Boston[®] XO₂**
Material



Allows 40% more oxygen to reach the eye, supporting corneal health and overall comfort*

- A hyper-Dk GP material that provides exceptional oxygen delivery (Dk =141)**
- Provides the stability generally found in low to mid Dk GP materials
- Ideal material for a variety of special design applications
- Inherently wettable so plasma treatment is optional

* Boston XO₂ delivers 40% more oxygen versus Boston XO.
** Dk 141 (50/7att Method).
© 2007 Bausch & Lomb Incorporated. Boston is a registered trademark of Bausch & Lomb Incorporated.

UMSL College of Optometry

Jessica Downs, OD

Sponsored by Firestone Optics, Inc.

NSU Oklahoma College of Optometry

Christopher S. Wolfe, OD

Sponsored by Metro Optics of Austin, Inc.

University of Houston College of Optometry

Nancy Guenther, OD

Sponsored by Tru-Form Optics, Inc.

Southern CA College of Optometry

Fouad Melamed, OD

Sponsored by Metro Optics of Austin, Inc.

UC-Berkeley College of Optometry

Gloria Chiu, OD

Sponsored by Valley Contax

Pacific College of Optometry

Anne C. Wolff, OD

Inter-American College of Optometry

Sharon L. Silva Núñez

Sponsored by Luzerne Optical Laboratories, Ltd.

GPLI – On Line Symposium

Mark Your Calendars!

Tuesday July 8, 2008 9:00 PM Eastern USA Time

GP Management of the High Astigmatic Patient

GPLI Advisory Co Faculty: Dr. Brad Giedd, Dr. Clarke Newman



Available around the world www.gpli.info

Log onto www.gpli.info—take the link for the on line symposium, log in and observe / participate in this informative 1 1/2 hour discussion forum.

All Eyecare Professionals are welcome to participate!

© 2008 GP Lens Institute

PO Box 29398
Lincoln, Nebraska 68529

Phone: 402-465-4122
Fax: 402-465-4187
Email: rgpli@aol.com



GPLI
GP Lens Institute

www.gpli.info



The GP Lens Institute is supported by the member companies of the CLMA



Referrals

New Fits

GP Fitter Locator searchable database

coming soon to www.contactlenses.org

Submit your GP fitting expertise information on

www.gpli.info

OPTIMUM
from Contamac...

OPTIMUM Classic
Dk. 88 Wetting Angle 18°

OPTIMUM Comfort
Dk. 88 Wetting Angle 8°

OPTIMUM Extra
Dk. 100 Wetting Angle 8°

OPTIMUM Extreme
Dk. 185 Wetting Angle 8°



...because the best lens designs need the best materials

"Call your GP contact lens laboratory today!"



Grammie Pammie Picks

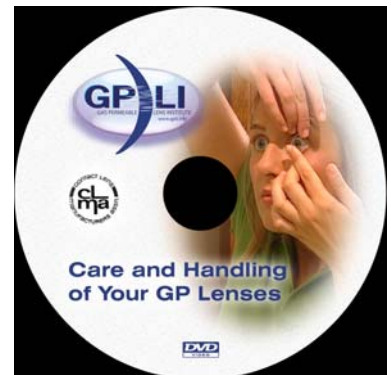
Order your complimentary DVD on **Care & Handling of Your GP Lenses**

Show it for your patients

Send them home with the companion brochure (also available to order in quantities complimentary up to 200)

Keep your GP patients in compliance with your preferences.

Also available for viewing on www.contactlenses.org



Order all GP educational resources on www.gpli.info.

The next issue of GPLI's **CONTACTS** scheduled for July 2008.